

Kempinski Hotel Nay Pyi Taw
11-12 National Guest House
Shwe Pyi Taw Win Road, Dekkhina Thiri Township
Nay Pyi Taw, Myanmar

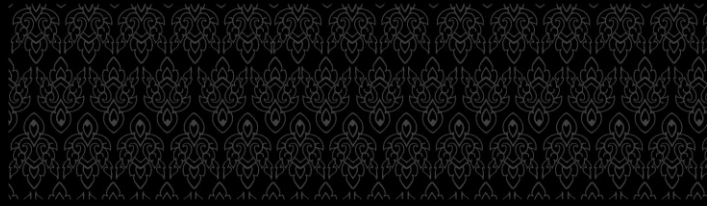
T: +95 (67) 810 6061
F: +95 (67) 810 6065
reservations.naypyitaw@kempinski.com
kempinski.com/naypyitaw

GPS LONG: E 96° 6' 47.577"
GPS LAT: N 19° 40' 50.073"

KEMPINSKI.COM

DISCOVER

Kempinski Hotel Nay Pyi Taw
welcomes you to mystical Myanmar



Experience European Luxury in Nay Pyi Taw

Kempinski Hotel Nay Pyi Taw is situated in a location near the Myanmar International Convention Centre (MICC).

The Gem Museum is only 5 minutes away, Pae Kyar Elephant Camp is a 30-minute drive, the ancient city of Bagan is a 3-hour drive, and there is a 20-minute transfer time between the hotel and Nay Pyi Taw International Airport.

Guests have a full spectrum of accommodation options with 141 rooms and suites located in three large one-storey villas named Ava, Bagan and Pinya.

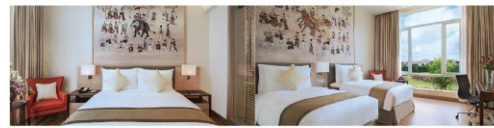
All rooms and suites enjoy relaxing views onto the landscaped gardens, and floor-to-ceiling windows add natural brightness to the modern décor.



Accommodation

Deluxe Room King Bed
Located across Ava, Bagan and Pinya Villas. 28 sqm

Deluxe Room Twin Bed
Reflect the global standard of 5-star hospitality for which Kempinski is known. 28 sqm



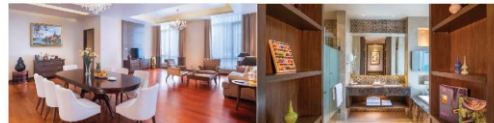
Premier Suite Living Room
Offering spacious living area coupled with comfortable sleeping quarters, perfectly suited for business or leisure travel. 37 sqm

Executive Suite Bedroom
A new standard for accommodation across the countries, featuring bedroom, living room and dining room. 122 sqm



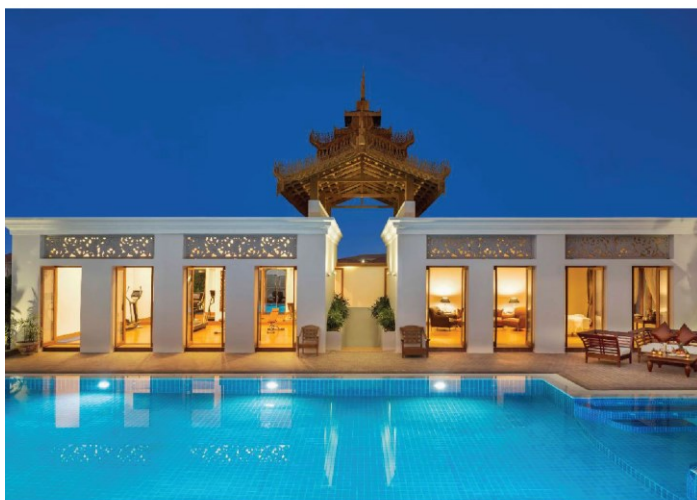
Executive Suite Livingroom
Stylishly design with contemporary décor and parquet floor.

Executive Suite Bathroom
Enjoy every relaxing situation as it echoes into the infinite peace that surrounds you.



Guest room facilities

- 40-inch flat-screen TV with a selection of local and international channels
- IDD line with voice mail
- Personal digital safe
- Centralised air-conditioning system with individual control
- Complimentary high-speed broadband and wireless internet access
- Multimedia port
- Complimentary coffee and tea making facilities
- Complimentary minibar
- 24-hour in-room dining
- Twice daily housekeeping service
- Complimentary local daily newspapers



Accommodation

Governor Suite Bedroom

The 3rd largest suite in the hotel, offering view of fairy-tale garden through the glass window. 182 sqm



Governor Suite Living Room

Stylish and elegant, perfect for any head of state.



Suites facilities

- In-room coffee and tea making facilities
- Laptop-size safe
- Free Mini-bar
- Flat-screen TV
- Working Desk
- Lounge Area
- Separate Living Room and Bedroom
- Powder Room
- Dining Room
- 24 hours Butler
- Baby cot allowed

**Some facilities are only available at specific suites.

Governor Suite Dining Room

Majestic colour scheme with magnificent décor.



Grand Royal Suite Bedroom

The crown jewel of Kempinski Hotel Nay Pyi Taw, located in Bagan Villa, one of the most beautiful and stately accommodations in all of Myanmar. 3,800 sqm.



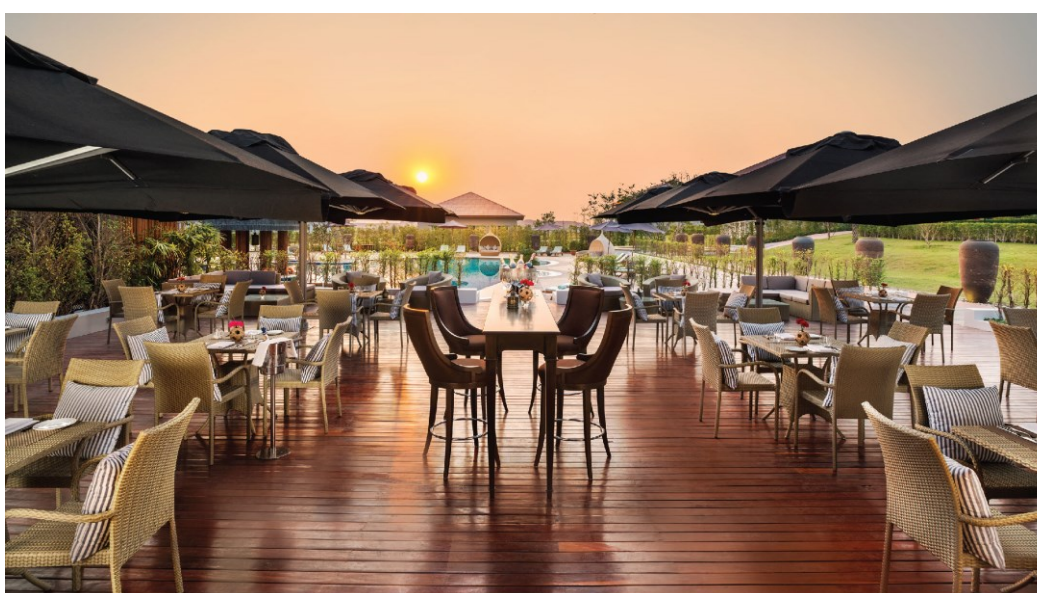
Grand Royal Suite Living Room

One of a kind. The Grand Royal Suite embodies the elegance and sophistication demanded by world leaders, business men and diplomats.



Grand Royal Suite Dining Room

Lavish dining room, fully equipped with the latest security systems and amenities ensure that visiting diplomats' strict security standards are met and exceeded.



Restaurants & Bars

Kempinski Hotel Nay Pyi Taw offers a variety of restaurants and bars with impeccable services and magnificent ambience.

- **Yangon Kitchen**
Sample the seductive flare of European cooking with an Asian twist, and enjoy the world on a platter for breakfast, lunch, and dinner
- **Diplomatic Bar**
Adding colors to your evening, with refined spirits, wine and the mixologist's cocktail specialties.
- **Pool Bar**
Fresh drinks, creative cocktails and canapes.
- **Bagan Executive Lounge**
Snacks and classic cocktails, wine and beer including local specialties including local specialties.
- **Pinya Executive Lounge**
Snacks and classic cocktails, wine and beer including local specialties including local specialties.

Tailor made dining options are available upon request.



Yangon Kitchen



Afternoon Tea



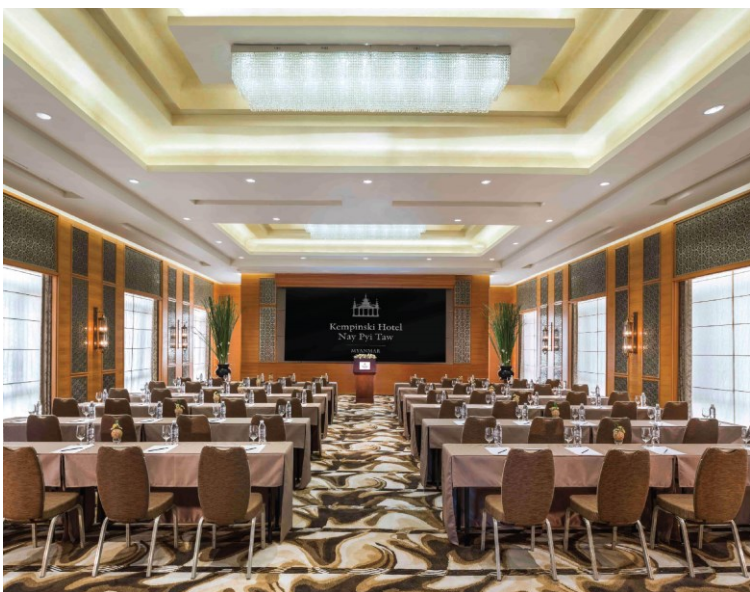
Meeting Rooms

For all your events, Kempinski Hotel Nay Pyi Taw offers elegant meeting and function rooms with latest state-of-the-art technology and food to inspire. The majestic Kisanadi Ballroom alone offers seating capacity for 500 guests.

Meeting and Banquet Facilities

- Ballroom with the longest single table in Myanmar, can seat 85 guests
- Five conference and banquet rooms
- Advanced audio /video technology
- High-speed broadband and wireless internet access
- Dedicated event planner

	Maximum Capacity
Kisanadi Ballroom	500 guests
Irrawaddy Meeting Room	200 guests
Dokhtawaddy Meeting Room	200 guests
Thanwin Meeting Room	125 guests
Chindwin Meeting Room	70 guests
Sittaung Meeting Room	14 guests



Leisure Facilities

There are endless ways to make the most out of your stay at the Kempinski Hotel Nay Pyi Taw.

- Outdoor Infinity Pool
- Massage and Treatment Rooms
- Fitness Centre
- Golf Arrangement
- Meditation
- Complimentary bicycle rental

- Swimming Pool opens every day from 06:30 to 23:00
- Fitness Centre opens 24 hours for all hotel guests

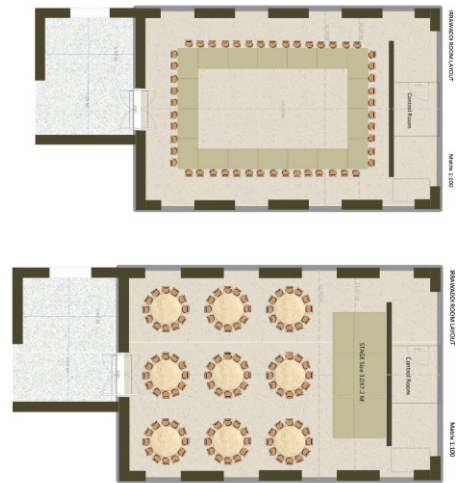
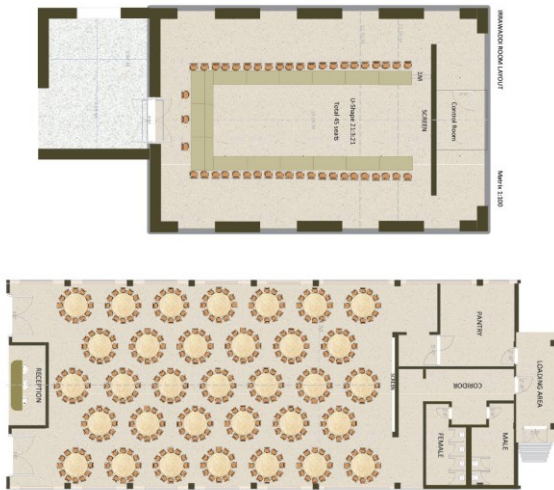


Naypyitaw is the capital of Myanmar, the last economic frontier in Southeast Asia, and the only city with access to government officials and departments.
This strategic location is also the central hub of the country, being easily accessible by those travelling to and from most of the regions. It has the best infrastructure, with broad roads, reliable electricity, and fast internet connections.
With the best MICE facilities in the country, Naypyitaw has become Myanmar's destination for conventions, conferences, exhibitions, and other events.

These are Naypyitaw's main MICE facilities:
MICC-1: Floor area: 627,000 square feet (58,250 square metres)
• 2 main halls, 33 function halls, 40 supporting rooms
MICC-2: Floor area: 312,000 square feet (28,985 square metres)
• 2 main halls, 7 function halls
Capacity of largest hall: 1,928 seats.

Gems Emporium: Floor area: N/A
Maximum seat capacity: 1,500

Winnat Theikdi Stadium is a multi-use stadium in Naypyitaw, and can seat 30,000 spectators. The stadium hosted the 2013 Southeast Asian Games and 2014 ASEAN Para Games opening and closing ceremonies.



Bagan Villa (12A)

Venue	Area (m ²)	Theatre	Classroom	Boardroom	Banquet
Kispayadi Ballroom	400	480	360	95	330
Imwaddy	200 sqm	200	150	50	130

Ava Villa (12B)

Venue	Area (m ²)	Theatre	Classroom	Boardroom	Banquet
Thanwin	100 sqm	125	72	28	80
Chindwin	70 sqm	66	45	22	50
Sittaung	35 sqm	-	-	14	-

Pinya Villa (11A)

Venue	Area (m ²)	Theatre	Classroom	Boardroom	Banquet
Dokhtawaddy	200 sqm	200	150	50	130



Places of interest

Uppatasanti Pagoda

We encourage our guests to visit the 325-foot-high Uppatasanti Pagoda. Also called the "Peace Pagoda", this prominent landmark houses a Buddha tooth relic from China and is almost the same size and dimensions as the Shwedagon Pagoda in Yangon. The name "Uppatasanti" means "protection against calamity", which used to be chanted in times of unrest to bring peace to the minds of warriors and citizens alike.



Gem Museum

A visit to the Gem Museum is a must during your stay in Nay Pyi Taw. Located only 5 minutes from the hotel, it features cabinets filled with rubies, sapphires, jade and the largest pearl in the country. Four times a year, the Myanmar Jade Emporium also takes place in the museum.

Poe Kyar Elephant Camp

Located in Pegu Yoma forest, a 30-minute drive from Nay Pyi Taw. Guests can enjoy an exclusive breakfast at the camp, see untouched nature, take a forest tour, ride and feed the elephants, and watch them bathe in the creek. Guaranteed to be a memorable experience.



Parliament House

The Pyidaungsu Hluttaw is made up of two houses, the Amyotha Hluttaw (House of Nationalities), a 224-seat upper house, and the Pyithu Hluttaw, a 440-seat lower house (House of Representatives).

The Pyidaungsu Hluttaw is housed in a 31-building complex representing the 31 planes of existence in Buddhist cosmology, and is located in Zeya Theddi Ward of Nay Pyi Taw.

Parliament house can now access to view inside for tourists with 5 days advance booking.



Special Events

Take advantage of the professional expertise of Kempinski Hotel Nay Pyi Taw staff to make your event remarkable and memorable.

Whether you prefer to have your special event at our large outdoor area adjacent swimming pool or at one of our elegant function rooms, the events we host span every style imaginable. We still base our service on our fine European heritage, and every occasion is given the same meticulous attention to detail.

Expansive choices of entertainment – music band, live performance or professional DJ can be arranged to colour up your party.



Limousine Service

	Price / Car / Way	Maximun Guests
Limousine	USD 90 net	3
Bus	USD 80 net	30
Shuttle	USD 30 net	per person per way